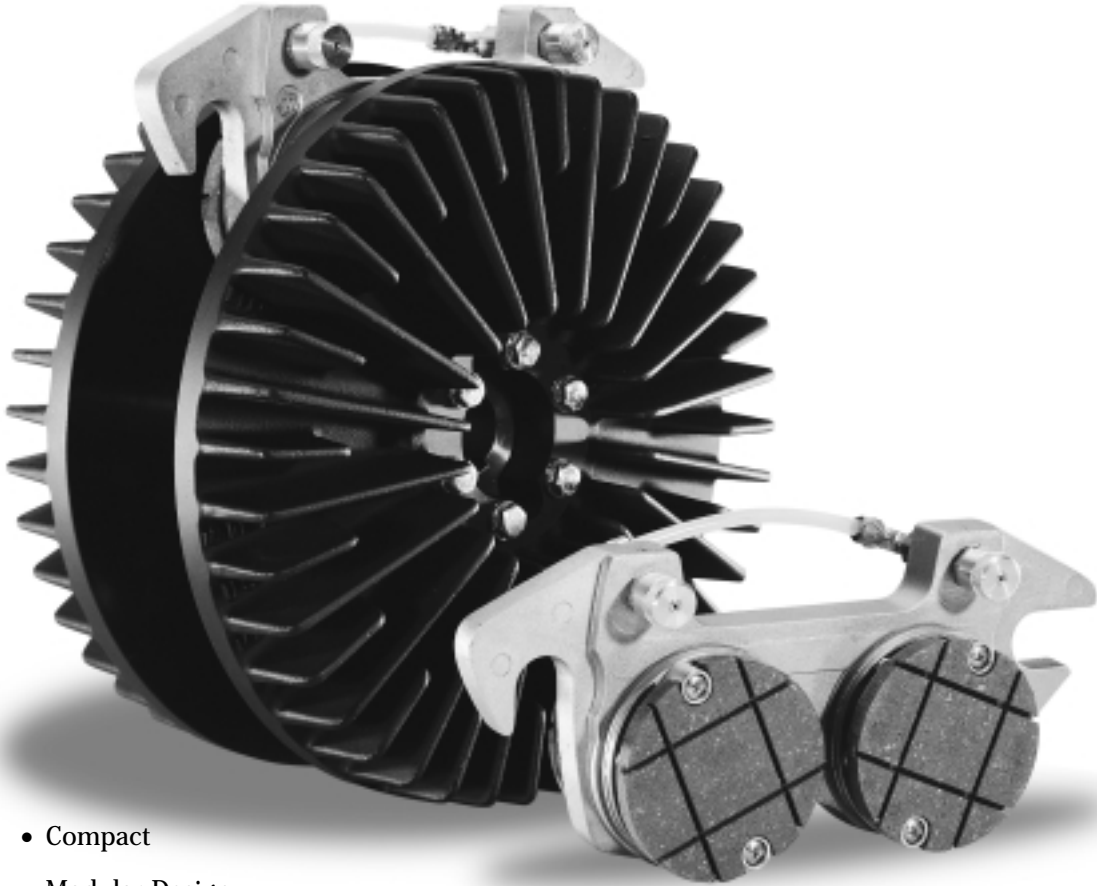




HP SERIES BRAKES



- Compact
- Modular Design
- Interchangeable Parts
- High Thermal Capacity
- High Torque Range & Capacity

HP Series Advantage

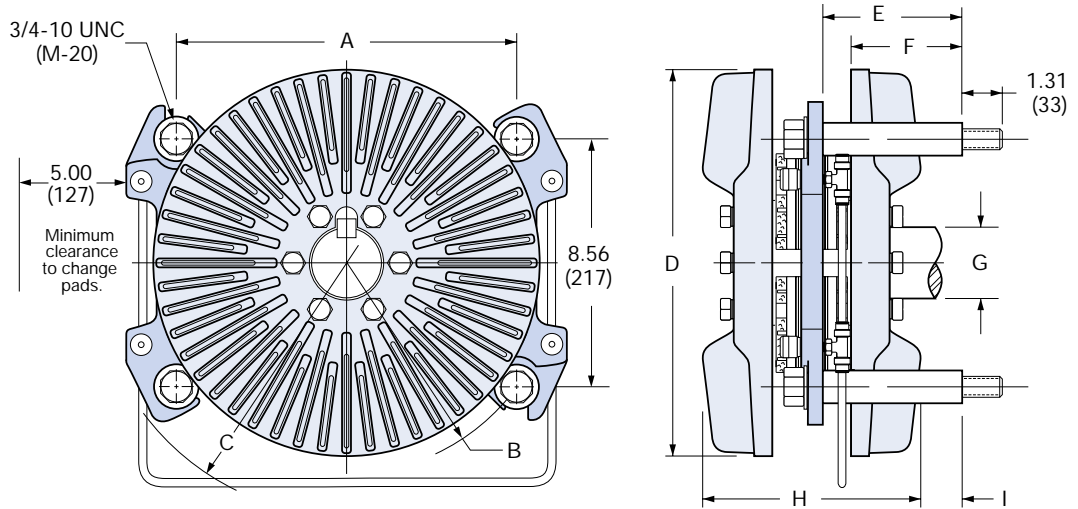
HP Series is the standard for tension control brakes in converting applications worldwide. It offers high thermal capacity coupled with “tissue to board” sensitivity. Montalvo’s original development of the dual disc, multiple-range air cooled brake virtually eliminated the need for water cooling and effectively put an end to traditional “piggy-back” products. The HP Series has been extremely successful and has taken Montalvo’s design a step further. The major design criteria in the development of the HP Series was that each size in the series should have the capacity of the next larger size in the Standard Series. Montalvo met and exceeded its goal with the HP Series - the standard for tension control brakes in the converting industry.

DIMENSIONS: HP BRAKES

HP Brakes without Adapters (HP 1004 shown)

HP 601-604
HP 801-804
HP 1001-1004

Note: The brake shown is model HP 1004. It is used only as an illustration of brakes which are mounted without the use of adapters and is not intended to represent the appearance of all HP brakes. The appearance, dimensions and degree of separation will vary.

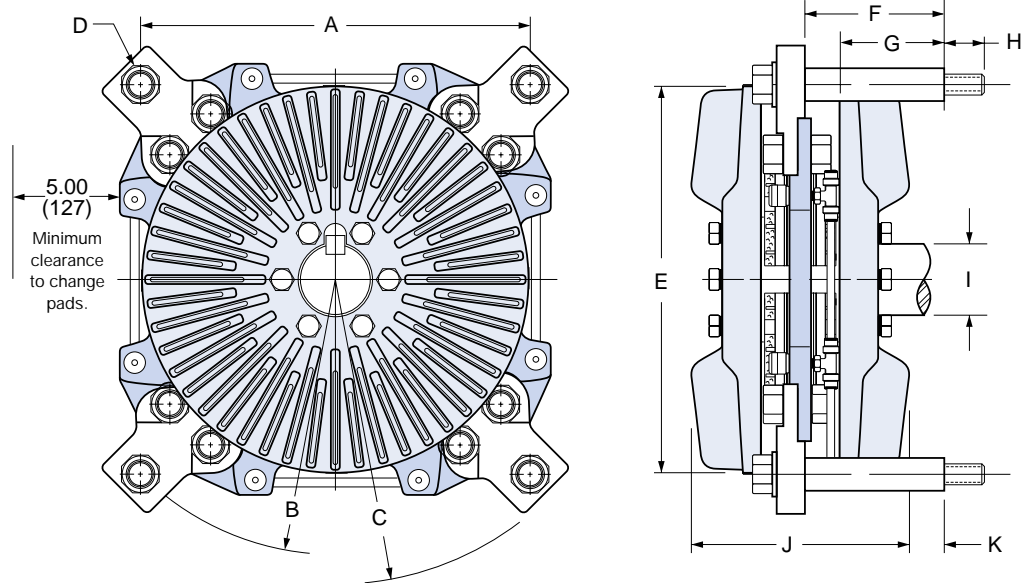


Model	A	B	C	D	E	F	G (max.)	G (min.)	H	I	Min. Shaft Length
HP 6	7.92 (201)	5.86r (149)	7.50r (191)	10.00 (254)	5.00 (127)	4.07 (103)	1.750 (45)	1.250 (35)	6.52 (166)	2.11 (54)	6.80 (173)
HP 8	10.00 (254)	6.58r (167)	8.50r (216)	11.75 (298)	6.00 (152)	5.07 (129)	2.000 (50)	1.250 (35)	7.20 (183)	2.77 (70)	7.80 (198)
HP 10	11.83 (301)	7.30r (185)	9.00r (229)	13.38 (340)	7.00 (178)	6.06 (154)	2.500 (65)	1.500 (40)	7.36 (187)	3.68 (93)	8.80 (224)

HP Brakes with Adapters (HP 1008 shown)

HP 805 & 806
HP 1005-1008
All HP 1400
All HP 1700
All HP 2600

Note: The brake shown is model HP 1008. It is used only as an illustration of brakes which are mounted with the use of adapters and is not intended to represent the appearance of all HP brakes. The appearance, dimensions, number of adapters (& studs) and degree of separation will vary.

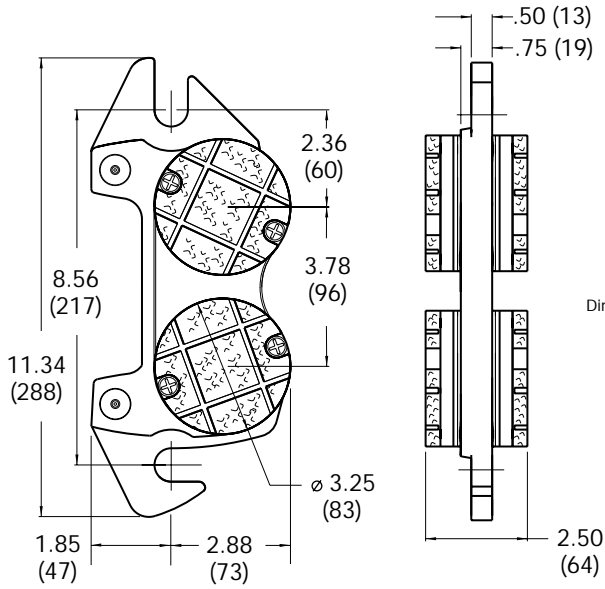


Model	A	B	C	D	E	F	G	H	I (max.)	I (min.)	J	K	# of Studs	Deg of Sep	Min. Shaft Length
HP 8	13.10 (333)	7.56r (192)	9.00r (229)	3/4-10 UNC (M-20)	11.75 (298)	6.00 (152)	4.82 (122)	1.30 (33)	2.000 (50)	1.250 (35)	7.20 (183)	2.52 (64)	3	120	7.55 (192)
HP 10	13.44 (341)	9.50r (241)	10.50r (267)	3/4-10 UNC (M-20)	13.38 (340)	7.00 (178)	5.82 (148)	1.30 (33)	2.500 (65)	1.500 (40)	7.36 (187)	3.44 (87)	4	90	8.55 (217)
HP 14	3.23 (336)	11.25r (286)	12.50r (318)	3/4-10 UNC (M-20)	17.25 (438)	8.40 (213)	7.22 (183)	1.30 (33)	4.000 (100)	2.000 (50)	8.10 (206)	4.47 (114)	5	72	9.95 (253)
HP 17	13.59 (345)	11.56r (294)	13.25r (337)	1 1/4-7 UNC (M-30)	20.88 (530)	10.00 (254)	8.82 (224)	1.30 (33)	5.000 (125)	2.500 (65)	9.18 (233)	5.53 (140)	5	72	11.55 (293)
HP 26	13.78 (350)	18.00r (457)	20.00r (508)	1 1/2-6 UNC (M-36)	30.00 (762)	14.00 (356)	12.82 (326)	1.52 (34)	5.000 (125)	3.750 (95)	12.25 (311)	8.00 (203)	8	45	15.55 (395)

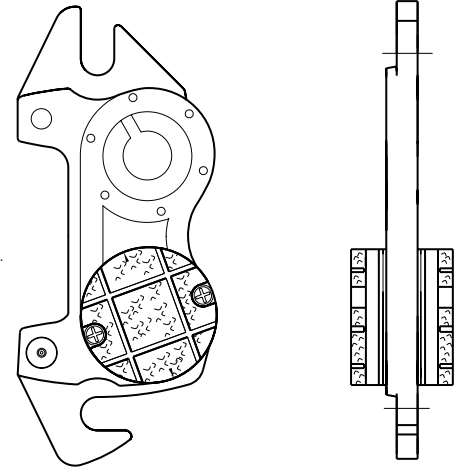
Note: All dimensions in inches (mm).

DIMENSIONS: STANDARD FRICTION MODULE

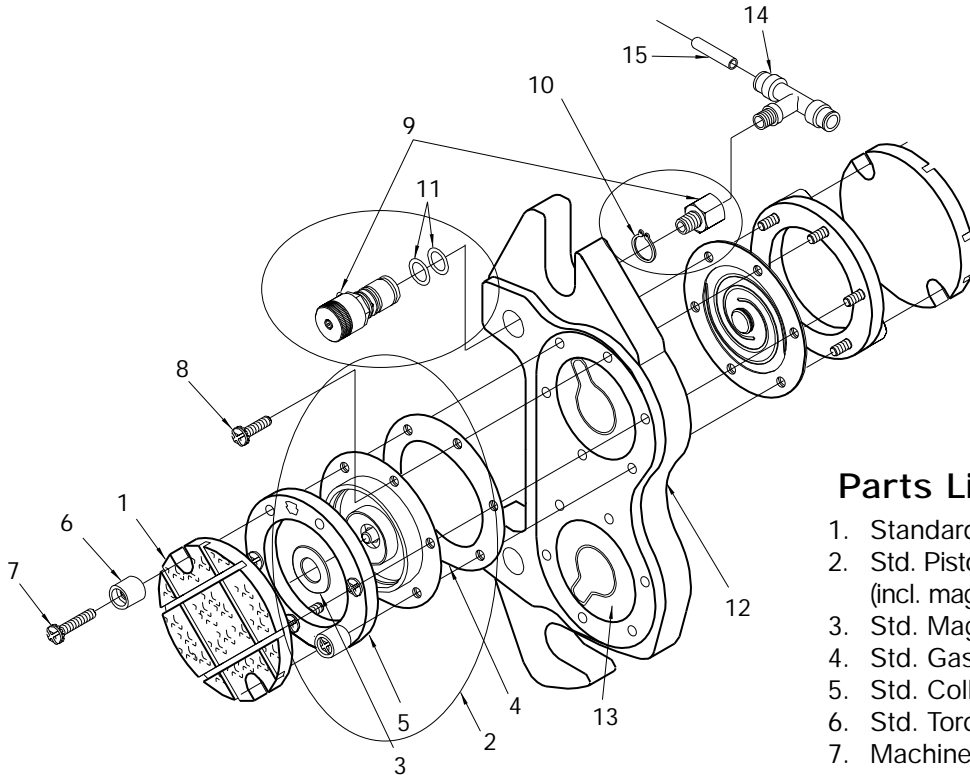
FRICTION MODULE Dual Cylinder



FRICTION MODULE Single Cylinder



Dimensions in inches (mm).
Dimensions same for both modules.



Parts List

1. Standard Friction Pad
2. Std. Piston Assembly (incl. magnet & gasket)
3. Std. Magnet
4. Std. Gasket
5. Std. Collar
6. Std. Torque Post
7. Machine Screw (10-24 x 1")
8. Machine Screw (10-24 x 3/4")
9. "J" Valve Assembly (incl. 2 O-Rings, 1 Retaining Ring & Extension)
10. Retaining Ring
11. O-Ring
12. Std. Friction Module Casting
13. Cylinder (Nomenclature only)
14. Push/Lok Fitting
15. Teflon Tubing

SPECIFICATIONS: HP BRAKES

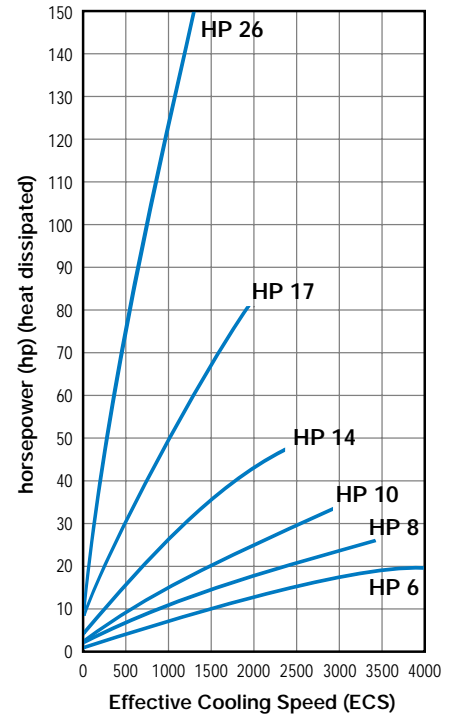
Model	Max. Torque† (@ 75 psi) in-lb	Min. Torque† (@ 1 psi) in-lb	Weight (disc-hub) lb	Inertia (Wr ²) (disc-hub) lb/ft ²	Max. Speed* rpm	Balance in-oz
HP 600 Series						
HP 601	750					
HP 602	1500					
HP 603	2250	10.0	35	4.30	4300	.16
HP 604	3000					
HP 800 Series						
HP 801	1035					
HP 802	2070					
HP 803	3105	13.8	61	10.8	3400	.41
HP 804	4140					
HP 805	5175					
HP 806	6210					
HP 1000 Series						
HP 1001	1230					
HP 1002	2460					
HP 1003	3690					
HP 1004	4920	16.4	105	20.8	2900	.90
HP 1005	6150					
HP 1006	7380					
HP 1007	8610					
HP 1008	9840					
HP 1400 Series						
HP 1401	1725					
HP 1402	3450					
HP 1403	5175					
HP 1404	6900					
HP 1405	8625	23.0	182	71.1	2300	1.9
HP 1406	10350					
HP 1407	12075					
HP 1408	13800					
HP 1409	15525					
HP 1410	17250					
HP 1700 Series						
HP 1701	2090					
HP 1702	4180					
HP 1703	6270					
HP 1704	8360					
HP 1705	10450					
HP 1706	12545	27.9	305	188	1900	3.9
HP 1707	14630					
HP 1708	16725					
HP 1709	18815					
HP 1710	20905					
HP 2600 Series						
HP 2601	3195					
HP 2602	6390					
HP 2603	9505					
HP 2604	12780					
HP 2605	15975					
HP 2606	19170					
HP 2607	22365					
HP 2608	25560					
HP 2609	28755	42.6	845	1070	1300	24
HP 2610	31950					
HP 2611	35145					
HP 2612	38340					
HP 2613	41535					
HP 2614	44730					
HP 2615	47925					
HP 2616	51120					

* Do not use to calculate drive horsepower (hp).

† All torque figures are based on continuous duty (slipping or tension). Rated torque may vary depending on operating temperature. Friction coefficients are nominal. All specifications are measured @ 0.45 C.O.F. (also available in 0.10 C.O.F. and 0.30 C.O.F.)

Testing

The brakes were mounted as recommended in the HP Brakes Installation Instruction Manual. No guard or cover was used during testing. Addition of machine guarding, fan or blower cooling, differences in ambient conditions, location, mounting method, etc. will affect heat (hp) dissipation capacity of any air cooled brake. Careful consideration should be given to all conditions surrounding installation. Please consult The Montalvo Corporation for help in application sizing.



Testing Conditions:

Ambient Temperature55°- 60°F (13°-16°C)
 Humidity65 - 70%
 Cast Iron Bulk Temperature350°F (177°C)

Effective Cooling Speed (ECS):

The speed at which a brake will dissipate a given heat horsepower: $ECS = \frac{2(rpm\ MIN) + rpm\ MAX}{3}$

Note:

Montalvo Brakes are called upon to operate within a wide speed range when used in converting applications. They do not carry "nominal" ratings.

THE MONTALVO ADVANTAGE

- Full Range of Competitively Priced Tension Control Products
- Superior Quality & Service
- Unmatched Worldwide Reputation



USA • Denmark • Japan

worldwide web control

The Montalvo Corporation • 200 Riverside Industrial Parkway, Portland, Maine 04103 USA • E mail: info@montalvo.com / www.montalvo.com
 Tel: (207)797-8710 Fax: (207)797-0356 Toll Free Tel: 1-800-226-8710 Toll Free Fax: 1-800-644-5097

Technical details subject to change without notice. Printed in U.S.A. 00-BHP-US © 2000 MONTALVO